

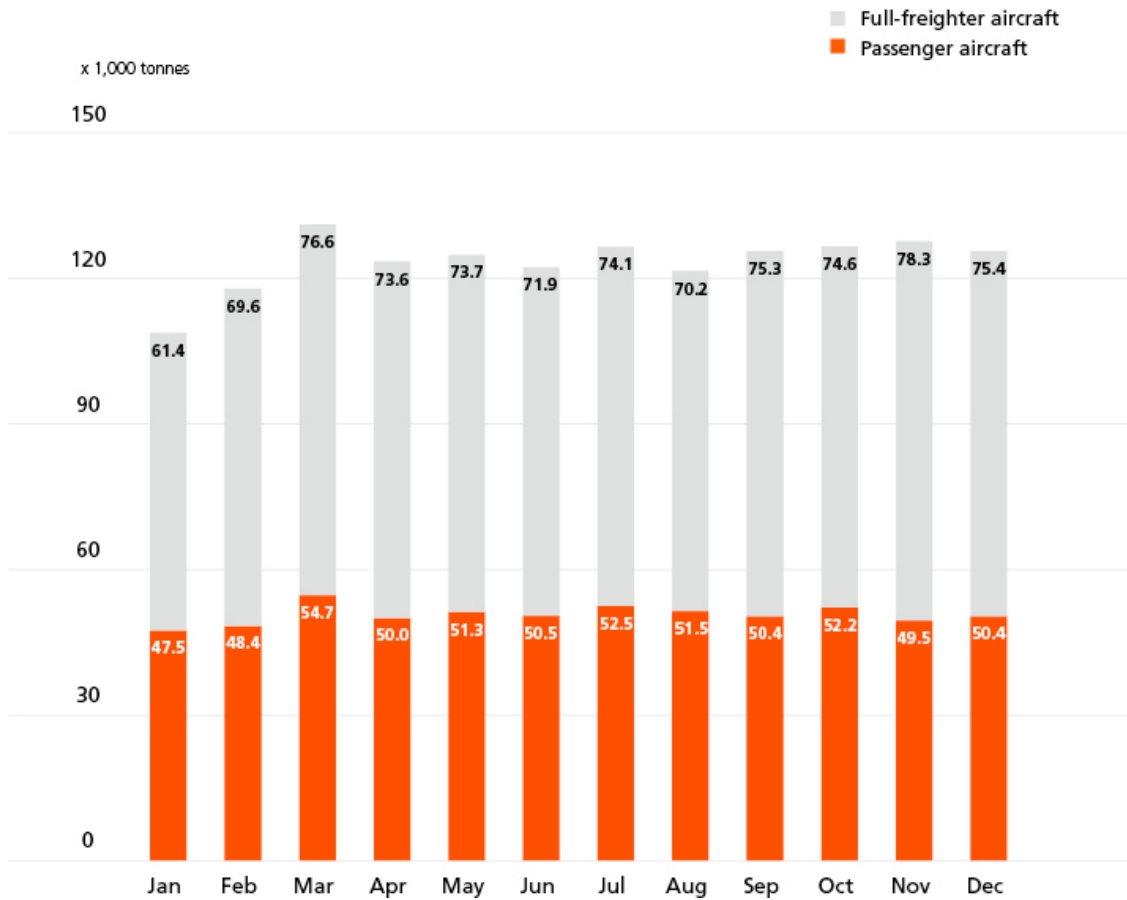


Cargo transport has experienced a small reduction at Amsterdam Airport Schiphol. In 2012 a drop was recorded – 2.6% with cargo totalling just under 1.5 million tonnes. Cargo transported on full-freighter services showed a decrease of – 0.9%, while cargo transported on passenger service flights went down by – 5.1%.



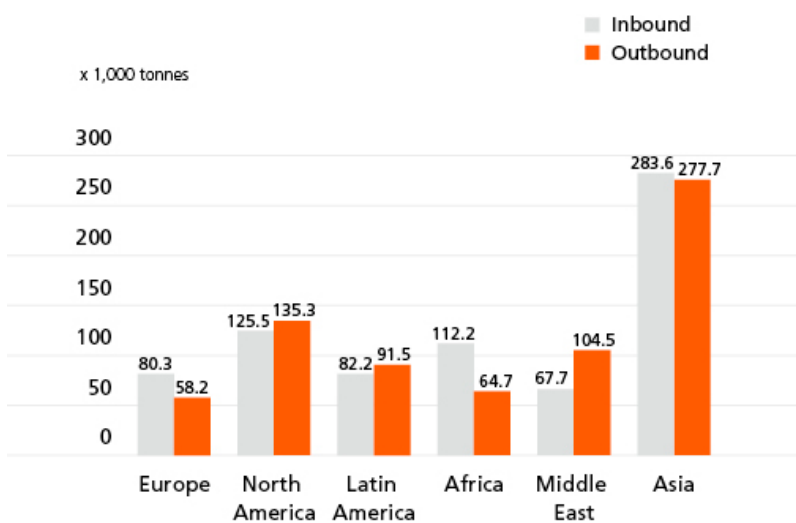
An overall decrease of cargo was observed in almost all regions except for Europe. The Far-East, the region with the most dense cargo traffic flow to and from Schiphol, dropped by – 7.9%. The second largest region North America also showed a reduction of – 7.9%. The busiest month in 2012 was March, with over 131 thousand tonnes.

→ Monthly totals per aircraft type



→ Annual totals by continent

Annual totals 2012



Total air transport

	2012	Compared to 2011 in %
Total	1,483.4	- 2.6%
Passenger services	608.8	- 5.1%
Full-freighter services	874.7	- 0.9%
Inbound	751.6	- 3.4%
Outbound	731.9	- 1.9%

→ Cargo, main origins and destinations

	(2011 ranking)	Airport	IATA code	2012 in tonnes	Compared to 2011 in %
1	(1)	Shanghai	PVG	143,736	- 13.2%
2	(2)	Nairobi	NBO	92,068	3.6%
3	(10)	Moscow	SVO	56,141	63.7%
4	(4)	Hong Kong	HKG	55,714	- 15.2%
5	(5)	Chicago	ORD	51,812	- 11.1%
6	(6)	Singapore	SIN	47,764	- 16.0%
7	(3)	Dubai	DXB	46,463	- 32.1%
8	(7)	Tokyo	NRT	44,349	- 9.2%
9	(8)	Seoul	ICN	39,336	- 4.2%
10	(11)	Doha	DOH	35,481	4.0%
11	(13)	Kuala Lumpur	KUL	33,707	10.0%
12	(16)	Guangzhou	CAN	32,847	24.0%
13	(12)	Quito	UIO	32,269	- 1.7%
14	(15)	Miami	MIA	32,039	13.5%
15	(22)	Jeddah	JED	31,300	59.0%
16	(9)	Johannesburg	JNB	30,292	- 23.2%
17	(14)	Houston	IAH	27,496	- 3.4%
18	(19)	Taipei	TPE	26,214	12.7%
19	(17)	Bogota	BOG	25,300	1.4%
20	(18)	Beijing	PEK	24,232	- 1.3%

→ Annual totals by aircraft type

